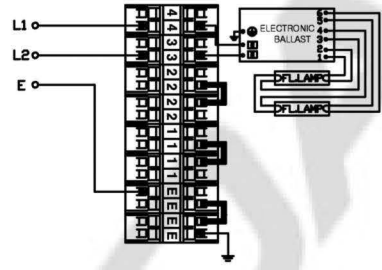
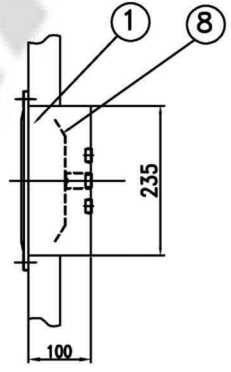
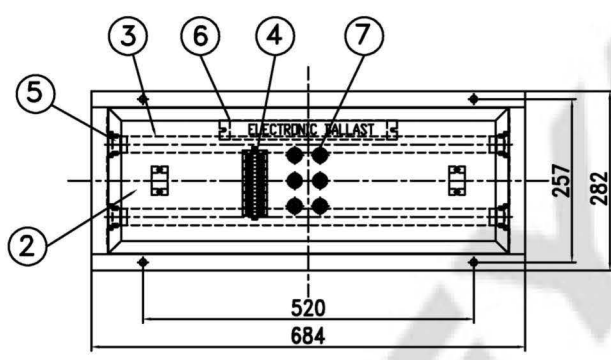
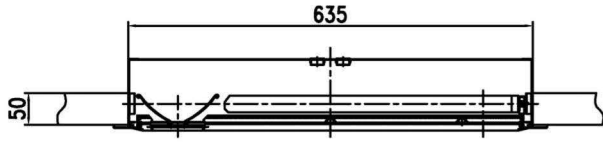
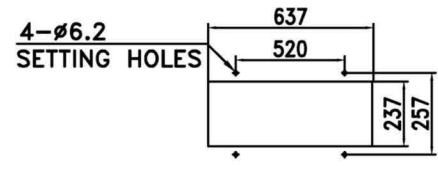


CAPACITY	SYMBOL / SERIAL NO.	CIRCUIT DIAGRAM
AC 230V, 60Hz		
18W x 2		



CIRCUIT DIAGRAM



CUTTING DIMENSION

*** CAUTION**
 When cleaning globe, please wipe clean with a damp cloth.
 Do not use thinner or (organic) solvent.

8	REFLECTOR	STEEL	1		4	TERMINAL BLOCK	-	1	CLAMPING 8P (2.5sq)
7	CABLE INLET HOLES	NYLON	6	ø16 SNAP BUSHING	3	LAMP(3-BAND)	-	2	
6	ELECTRONIC BALLAST	-	1		2	GLOBE	POLYCAR-BONATE	1	
5	LAMP HOLDER	POLYCAR-BONATE	4		1	BODY	STEEL	1	
NO	NAME OF PARTS	MATERIAL	Q'TY	REMARKS	NO	NAME OF PARTS	MATERIAL	Q'TY	REMARKS

APPROVED	O. J. KWON	UNIT	MM
CHECKED		SCALE	N/S
DRAWING	B. I. KIM	COLOR	N-9.3
DATE	2019.03.03	IP	20

TITLE;
**FLUORESCENT CEILING LIGHT
 (NO-GAP, FLUSH TYPE)
 FOR MARINE USE**



MODEL NO.	FL220NF-0236EISNh12C840-A	WEIGHT	7.5 Kg
DWG NO.	L11150691	SHEET NO.	19